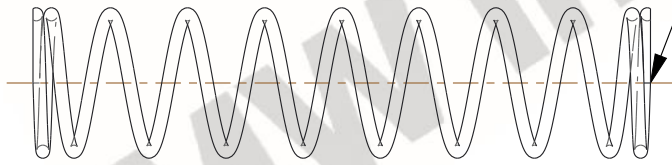


NOTES:

1. Material : Music Wire
2. Finish : Glod Irridite
3. Ends : Closed and Ground
4. Total Coils : 10.500
5. Sugg. Max. Deflection : 2.400 (in)
6. Sugg. Max. Load : 30.000 (lbs)
7. All Drawing Dimensions are in Inches [mm]

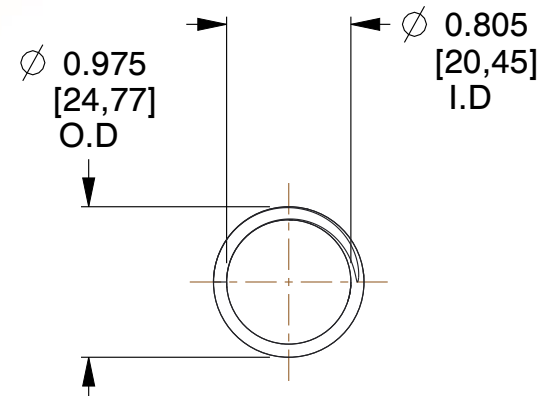


\varnothing 0.085
 [2,16]
 WIRE DIA



GROUND SURFACE

1.910
 [48,51]
 LENGTH



\varnothing 0.975
 [24,77]
 O.D

\varnothing 0.805
 [20,45]
 I.D

COMPONENT		SPRINGS	
72393 COMPRESSION SPRINGS		UNIT	INCH [mm]
		SHEET	1 of 1